

Turning retail design into reality



g est. 1985 **guildprime**
specialist contracts
construction | fitout | manufacture

RETAIL PROJECTS



Guildprime Specialist Contracts wants to help you inspire a lifetime of loyalty in your customers. To create a love affair with your brand - one they won't stop talking about, returning time and again to your stores and sharing with others.

With ever increasing demands on your resources, we have the knowledge of materials and the build process to help you maximise your fit-out budgets.

We are a trusted partner to many of the world's most prestigious blue chip retailers, their architects and advisors.

So you can be sure you're in safe hands.



RETAIL PROJECTS





Raise the bar

Guildprime Specialist Contracts has the expertise to transform your ideas into reality, whether you're opening your first store, launching international store concessions or boosting your lead as a revered retail brand with flagship stores in prime locations.

We make it our mission to pursue excellence for you.

When it comes to your budget, we have extensive experience of value engineering and will go to the ends of the earth to achieve your plans.

When it comes to your schedule, our dedicated project manager, site manager and a knowledgeable support team will be on hand to ensure your programmes running smoothly.

And when it comes to the results, our experts will ensure you're kept in the loop every step of the way. This ensures we hit the bullseye and you triumph, first time.

All types of bespoke carpentry, joinery, spray finishes and metal fabrication for a wide range of products are made to order in the company's own manufacturing facilities.



Just what you're looking for

We believe we're the best in the business.

From the humble beginnings in 1985 of just two employees offering shop fit-outs to today providing specialist contract services to the retail sector, Guildprime has an enviable reputation for accuracy, hard work and timely results.

We offer top-class quality and delivery that is backed up by over 30 years' of experience servicing the world's most celebrated brands.



The company constantly look towards areas where savings can be made for clients, without compromising quality – this 'cost engineering' approach runs throughout every process.



Perfect fit

Our fit-out teams harness talent worldwide to deal with all environments and buildings of various heritage and states of repair.

Our dedicated contract manager will work with your teams to orchestrate a programme of work that's spearheaded by your store opening date - working closely with estimators, architects, interior designers, quantity surveyors, brand management and other construction professionals.

Our international hub of staff and subcontractors track down the finest quality materials, fixtures and fittings for you - from pearlescent finishes, unique Origami ceilings to our own market-leading specialist finishes such as high-gloss polyesters and UV lacquers. We have our own colour and veneer matching laboratory.

If you have seen it, or have a sample, we can match it.

Guildprime's unique manufacturing hub, offices and operation in Essex, UK, and high spec workshops, facilities and operations in France, the Caribbean, South America and India allows us to replicate full interiors before shipment or installation.

This ensures the perfect fit, first time, every time

Guildprime is a market leader in specialist finishes including high gloss polyesters. In-house spray bake ovens ensure clients' needs always get the priority and attention required.

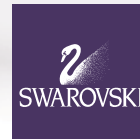





Villeroy & Boch
1748

LOUIS VUITTON

PHILLIPS
de PURY & LUXEMBOURG



TOMMY HILFINGER
UNDERWEAR

NATUZZI

GALERIES
Lafayette

MaxMara
OCCHIANTI

John Lewis

DKNY

SELFRIDGES & CO



swatch®

N. PEAL
LONDON

RALPH LAUREN

Christofle
PARIS




MULBERRY

ANNE KLEIN



BOODLES
BRITISH EXCELLENCE SINCE 1798



At your service

Why are we so sure of ourselves? Well, our client list speaks volumes.

From the world's most sought-after shopping locations, our clients keep coming back to us because we serve them so well.

They can rely on us 100 percent and we're proud to have worked with many luxury and world famous companies for many years, such as Gucci, DKNY, Louis Vuitton, Michael Kors, Christian Dior and Tom Ford.



HARVEY NICHOLS

Peek&Cloppenburg



MICHAEL KORS

GUCCI



KILDARE VILLAGE
CHIC OUTLET SHOPPING



J & M DAVIDSON

WATERWORKS



PRINTEMPS



JASPER CONRAN



A culture of pride combined with unwavering quality control, delivers a finish that is without parallel every time.





A greener way of working

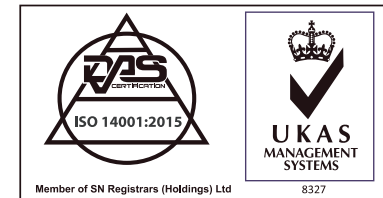
Although we deal in big visions, we leave a small footprint.

For more than 13 years, Guildprime has been proactive in reducing the impact of its work on the environment.

Since 2003 our wood waste has been used to fuel a custom-built industrial wood burner that provides heat for our workshops. So you can feel doubly good about our manufacturing processes.

Here are some other important steps we're taking:

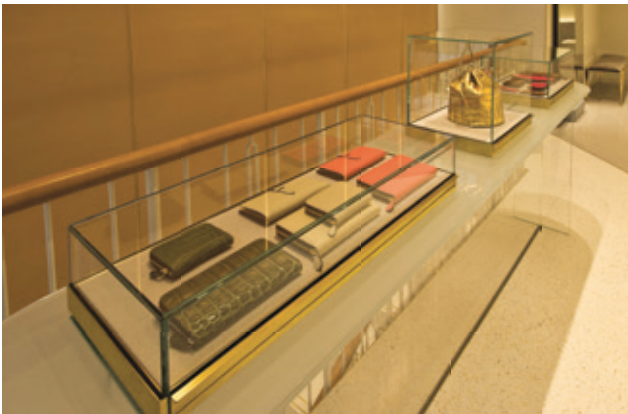
- **Project site waste segregated and sent to locally-designated recycling and waste plants**
- **Materials acquired from renewable sources**
- **Reducing noise pollution and improving the face of construction on work sites**
- **Investing in new low-emission vehicles**



Keep us on our toes

We're always looking for ways to improve, so please talk to us about how we can work together to meet your own sustainability commitments.





J & M DAVIDSON

Features of the new store included: a floating terrazzo staircase and matching terrazzo flooring together with leather wrap balustrade handrail. Guildprime also built all display cabinets, tables and cases and furniture in a variety of materials and fabrics.

Making structural alterations to the fabric of a building when your neighbours are exclusive brands required careful planning and regard for concerns about trading, especially around the busy Christmas period.



WATERWORKS

Guildprime work closely with the US based luxury bathroom retailer on their flagship showroom in Kings Road.

The works consisted of a full Turnkey fit out, incorporating major structural alteration including removal and reinstatement of two complete floors, removal of the spinal wall between two properties.

New storefront, marble and wood floor throughout and the installation of a tailor made steel staircase. Fully integrated mechanical and electrical design and purpose made joinery manufactured and built off-site in Guildprime's workshops before dispatch and fitting.









MICHAEL KORS

It was paramount to the new concept design that all services and grilles were incorporated within the fixtures. It was therefore vital that our in-house draughtsmen and setter-outs coordinated effectively with the M & E engineers, store designers, Architects and our workshop to produce a detailed co-ordinated set of working drawings.

Structural openings, new staircase, Mirror polished Stainless steel fixtures and store front, Marble floor, walls and units, integrated air-conditioning, fibrous ceilings, Polished plaster, Upholstered walls and panels, AV system. This could only be a Guildprime project.





HARRY'S OF LONDON

Burlington Arcade was undergoing a major refurbishment at the time of our fit out for Harry's so careful planning and communication with the Landlord was essential. The resulting completed project is a wonderful example of good design fitted out beautifully within a confined space.

All joinery, metalwork and specialist finishes manufactured in-house by Guildprime.









JEROME DREYFUSS

Brutalism along with the architectural creations of Italian architect Carlo Scarpa are the inspiration for Jerome Dreyfuss' first London store. The result is an exciting mix of materials including different types of concrete and natural oak.

A tight works schedule and limited internal space to store materials required Guildprime to work closely with their French partners to co-ordinate deliveries on a just-in-time basis.





TUMI - FLAGSHIP STORE

This flagship store in London's Regent Street occupying basement, ground and first floor is Tumi's largest store anywhere in the world.

As such it demanded the highest levels of finish throughout.

Front of Store a modern vibe was created through the use of a mirror polished stainless steel staircase up to the first floor, along with state-of-the-art LED screens mounted into the walls, creating a welcoming, social and modern environment in which product display and customer comfort are paramount.







● **UK** - 18211m² head office and operations complex in Essex

● **France** - 7,500m² workshops & facilities

Workshops and facilities across the world

● **Guadeloupe** - 2000m² workshops and facilities

● **Martinique** - 2100m² workshops and facilities

● **Guyane** - 2000m² workshops and facilities

 est. 1985 **guildprime**
specialist contracts
construction | fitout | manufacture

Call +44 (0)1277 637 888 or
email info@guildprime.com
to discuss your project.

[w. guildprime.com](http://w.guildprime.com)

● **Reunion** - 1200m² workshops and facilities

Guildprime services:

- *Design Development*
- *Quantity Surveying*
- *Contracts Management*
- *Turnkey Projects*
- *Setting Out*
- *Joinery Manufacture*
- *Finishing*
- *Metal Fabrication*
- *Installation*
- *M&E Service Management*
- *Storage & Distribution*
- *Maintenance*



Guildprime Specialist Contracts Ltd
Guildprime Business Centre, Southend Road
Great Burstead, Essex, CM11 2PZ

t: +44 (0)1277 637 888

f: +44 (0)1277 637 889

w: guildprime.com

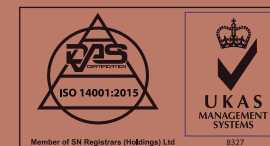
Join us on social:

twitter.com/GuildprimeSC 

linkedin.com/company/guildprime-specialist-contracts-ltd 

facebook.com/GuildprimeSpecialistContracts 

instagram.com/guildprime 



Although every effort has been made to ensure that the information contained within this brochure is accurate, Guildprime Specialist Contracts Ltd reserves the right to modify its services without notice.